

FUNCTION SPACES

WE HAVE SEVERAL AREAS TO HOLD YOUR NEXT EVENT. FROM THE SECLUDED AND PRIVATE COURTYARD TO THE FAIRFIELD BAR OR THE MOUNT ROOM, WE'RE SURE TO HAVE A SPACE YOU'LL LOVE.



THE COURTYARD

THIS IS THE PERFECT LOCATION FOR SUNDOWNERS. SITUATED TO THE RIGHT OF THE HOTEL AND FACING SCARBOROUGH BEACH ROAD, THE SECLUDED AND SHADY COURTYARD OFFERS A PRIVATE YET OPEN AIRED LOCATION FOR YOUR GROUP. THE RELAXING WATERFALL AND MIST SPRAYERS MAKE THE COURTYARD PERFECT FOR A WARM SUMMER'S DAY. CAPACITY: COCKTAIL 60 GUESTS SITDOWN – 40 GUESTS

THE LOUNGE

A CAUSAL SEMIPRIVATE SPACE THAT IS GREAT FOR THE NOT SO FORMAL AFFAIR. PERFECT FOR SMALL STAND UP COCKTAIL EVENTS, WITH A LOUNGE THAT IS GOOD IF SOMEONE DOES NEED A SEAT. SMART TV IN THE AREA ALSO IS GREAT FOR SHOWING SMALL CORPORATE DISPLAYS; PRESENTATIONS OR SLIDESHOWS. A GREAT SPOT FOR CORPORATE MIXERS OR FOR FAMILY REUNIONS; THE SPACE IS FLEXIBLE ENOUGH FOR ANY EVENT. CAPACITY: COCKTAIL – 50 GUESTS SITDOWN 30 GUESTS

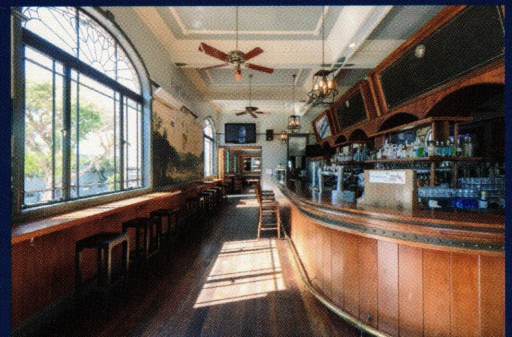


THE MOUNT BAR

THIS AREA IS IDEAL FOR LARGE CORPORATE FUNCTIONS, AWARD CEREMONIES, CHRISTMAS PARTIES OR SIMILAR. IT INCLUDES THE USE OF THE SPORTS BAR AND/OR MOUNT BAR, LED SUPER SCREEN PLUS 8 FLAT SCREEN TVs, AUDIO / VISUAL EQUIPMENT, TOILET FACILITIES, SWEEPING VIEWS OF THE CITY AND SURROUNDING MOUNT HAWTHORN AREA. CAPACITY: COCKTAIL – 350 GUESTS SITDOWN 130 GUESTS

FAIRFIELD BAR

LOCATED TO THE LEFT OF THE MAIN BAR AREA, THE FAIRFIELD ROOM HAS SWEEPING VIEWS TO FAIRFIELD STREET AND SCARBOROUGH BEACH ROAD, WITH FULL ACCESS TO THE BAR AND OUR 150 PRODUCT RANGE. THERE ARE ALSO TWO LARGE FLAT SCREEN TVs. THIS IS THE PERFECT PLACE TO HOLD ANY CELEBRATION. CAPACITY: COCKTAIL – 100 GUESTS



THE DINING ROOM

THE MAIN DINING ROOM OF THE PADDINGTON ALEHOUSE IS AVAILABLE FOR YOUR MORE UPSCALE EVENTS; IDEALLY UTILISED FOR EXCLUSIVE USE FOR ENGAGEMENT PARTIES, BIRTHDAY DINNERS OR OTHER CORPORATE EVENTS. THE HERITAGE STYLING HELP TO CREATE THAT CLASSY AND MOODY ATMOSPHERE YOU ARE SEEKING FOR YOUR NEXT EVENT. DEPENDING ON AVAILABILITY; THE COURTYARD OR LOUNGE CAN ALSO BE INCORPORATED INTO THE PACKAGE TO EXPAND CAPACITY TO OVER 200 GUESTS. CAPACITY: 130 GUESTS SITDOWN – 75 GUESTS



THE PADDINGTON ALE HOUSE

EVENTS AND FUNCTIONS

WELCOME TO THE PADDINGTON ALE HOUSE, THE HEART AND SOUL OF MT HAWTHORN. THIS HISTORIC AND ICONIC CORNER PUB OFFERS A FANTASTIC PLACE TO UNWIND AND SOCIALISE.

WE ARE OPEN FOR LUNCH AND DINNER AND OFFER A VARIETY OF MEALS FROM TRADITIONAL AUSSIE PUB MEALS TO DELICIOUS BURGERS WITH HOMEMADE PATTIES.

OUR SPACES ARE PERFECT FOR ANY KIND OF EVENT; BIRTHDAYS, ANNIVERSARIES, WAKES, WORK PARTIES, CONFERENCES AND HENS/BUCKS NIGHTS.
SMALL OR LARGE GROUPS.

COME IN AND HAVE A LOOK AT WHAT WE CAN OFFER FOR YOUR NEXT EVENT